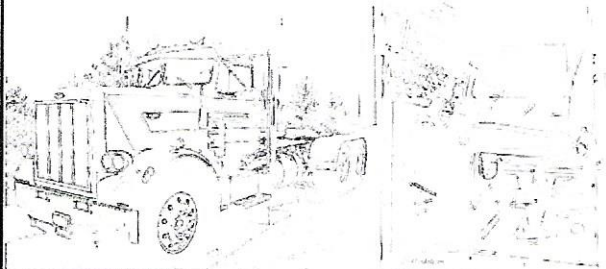




CTM 24153 '67 - '72 PETERBILT 359 - INTERIOR

CTM PHOTOETCHED AND RESIN PARTS



CTM 24153 '67 - '72 PETERBILT 359 - INTERIOR



- DETACH WITH KNIFE



- BEND



- REPLACE



- OPTIONAL



- NUMBER OF WORKING STEPS



- MAKE A HOLE



- GRIND

This set is not a children's toy and was designed for professional modellers only who already have some skills in working with photoetched parts. Special tools for bending of photoetched parts is recommended when working with this set. Non using this tool during bending may cause destruction of the part. Careful bending of the most of the parts could be also done using a metal ruler, a sharp knife and a tweezer on a hard surface. Pay attention, be careful and keep your safety and health in mind during work!

For gluing and filling a cyanoacrylate glue and a glue removing liquid is recommended. When (or even before) working with each part inspection of the real part on the vehicle or a picture of the real thing is recommended and helpful.

Modification of plastic parts may be required for proper use of some of the photoetched parts

CTM 24153 '67-'72 Peterbilt 359 - interior

- 1/ Upper part of the dashboard
- 2/ Lower part of the dashboard
- 3/ Pedals
- 4/ Control
- 5/ Heating control levers
- 6/ Heating mesh
- 7/ Passenger's glove box door
- 8/ Mikrophone
- 9/ C.B. radio
- 10/ Air vents
- 11/ Loud speaker pad
- 12/ Support for part No. 19
- 13/ Motorola radio
- 14/ Control/driver
- 15/ Control/driver
- 16/ Clutch pedal
- 17/ Controls/drivers
- 18/ Loud speaker
- 19/ Heating, windscreen nozzle

1/ Upper part of the dashboard



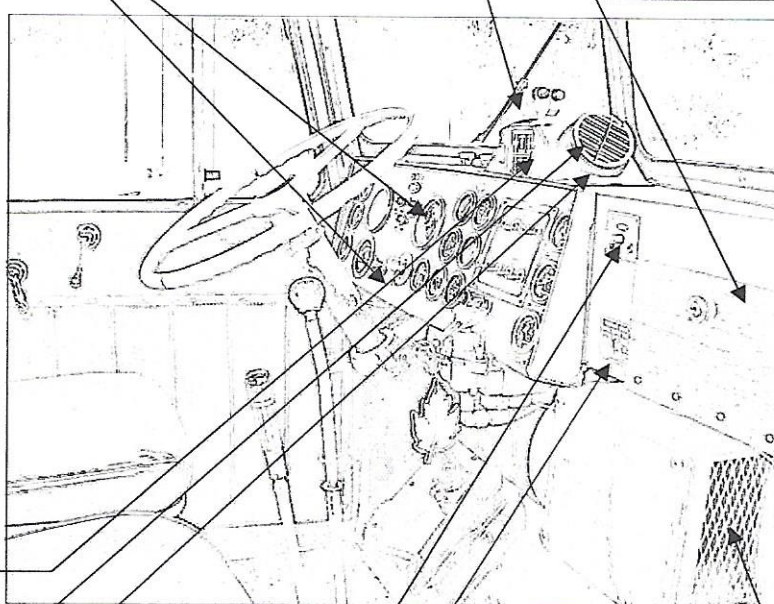
2/ Lower part of the dashboard



5/ Heating control levers



7/ Passenger's glove box door



19/ Heating, windscreen nozzle



10/ Air vents



12/ Support for part No. 19



14/ Control/driver

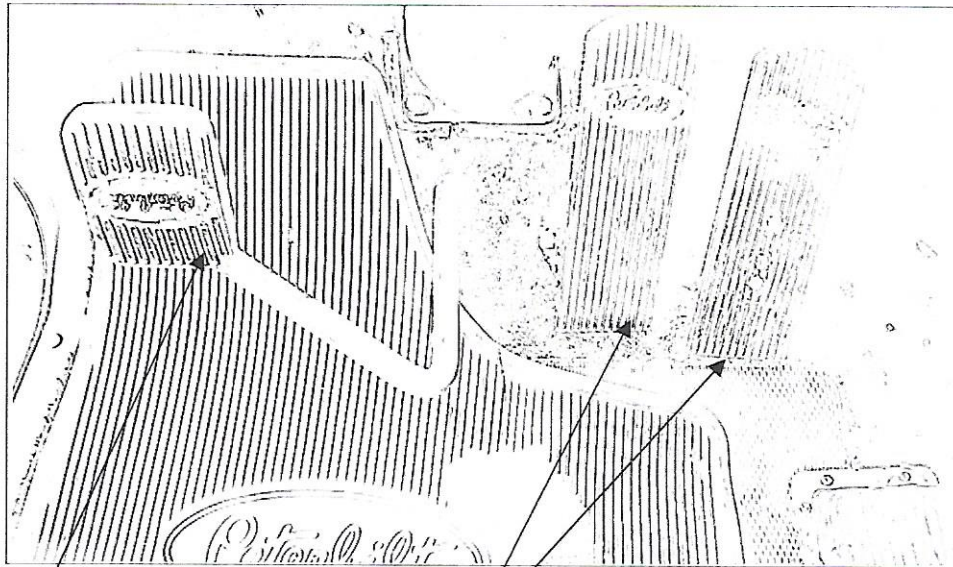


15/ Control/driver



6/ Heating mesh



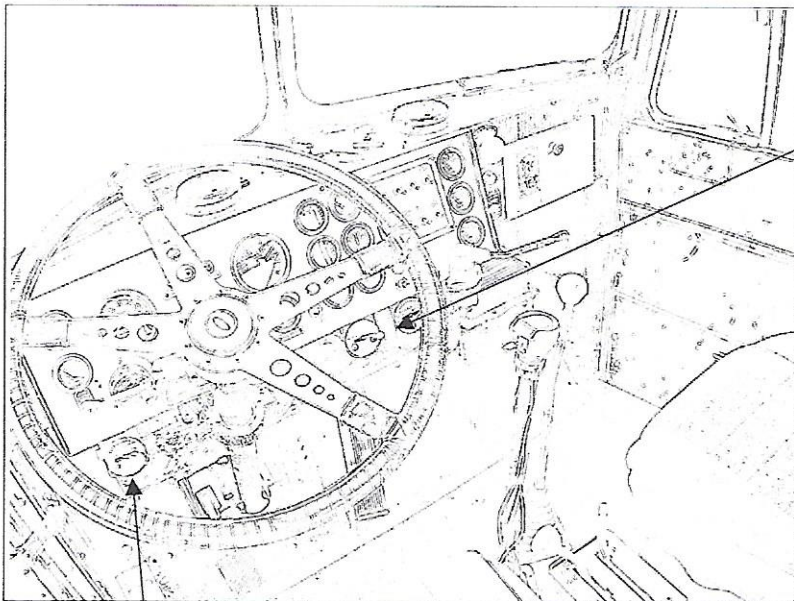


3/ Pedals

R 2x

16/ Clutch pedal

R



17/ Controls/drivers

R

4/ Control

R

11/ Loud speaker pad

2x R

18/ Loud speaker

R 2x

